



SUZUKI MOTOR OF AMERICA, INC.

# IMPORTANT EMISSIONS RECALL CAMPAIGN

This Notice Applies to Your Suzuki Vehicle Identification Number (VIN)

August 1, 2017

Dear Suzuki Owner:

Suzuki is conducting an Emissions Recall Campaign involving certain 2017 UH200A (Burgman 200) vehicles, and is sending you this notice in accordance with Environmental Protection Agency (EPA) and California Air Resources Board (CARB) regulations.

### What is the problem?

On certain 2017 UH200A models, the vehicle emission control information (VECI) label required under U.S. Environmental Protection Agency (EPA) and California Air Resources Board (CARB) regulations contains an error.

The existing VECI label indicates an 1,800 RPM engine idle speed – the correct engine idle speed is 1,700 RPM. Due to this error, the existing VECI label must be replaced with a new label.

### What is Suzuki Motor of America, Inc., doing to solve the problem?

We have enclosed a corrected VECI label and instructions (page 2) for applying this label to your vehicle. Once you have applied this corrected label to your vehicle, the emissions recall for your vehicle is complete – there is nothing further you need to do.

### What you should do:

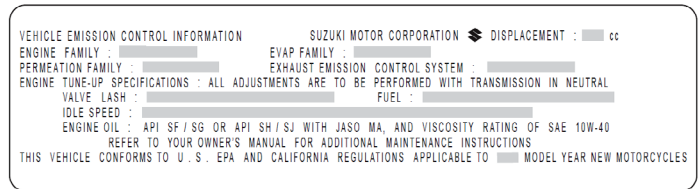
Please use the instructions provided on page 2 of this letter to apply the new VECI label to your vehicle.

If you have additional questions, please visit <http://www.suzukicycles.com/recalls.aspx> to read the Emissions Recall Campaign - 2017 UH200A Information Label Replacement.

### What to do if you receive this letter in error:

This notice was mailed to you according to the most current information we have available. If you no longer own the Suzuki vehicle described in this letter, please complete and return the attached postage-paid card to Suzuki Motor of America, Inc., and forward this recall information to the current owner (if known).

### VECI Label



2017 UH200A Helmet Holder (beneath the seat)

Federal regulations require that any vehicle lessor receiving this recall notice must forward a copy of this notice to the lessee within ten days.

### **Who to contact if you experience problems:**

If you have any difficulty with this recall campaign, you may contact the Suzuki Motor of America Customer Service Department for assistance at (714) 572-1490 during the hours of 8:30 AM to 4:30 PM Pacific Time. Please have your Vehicle Identification Number (VIN) ready when calling. You may also leave a brief message at (800) 444-5077 and a representative from the Suzuki Motor of America Customer Service Department will contact you.

Sincerely,

Suzuki Motor of America, Inc.

### **VECI Label Installation Procedure:**

- 1) Install the ignition key into the ignition switch and turn it counterclockwise to release the seat lock.
- 2) Lift the seat forward.
- 3) Starting from the corner of the existing VECI label, carefully and gently lift the clear laminate film from the label.
- 4) Clean the surface of the existing VECI label so that it's free of dust and any residue.



#### **NOTICE**

**Certain chemicals, such as carburetor cleaner and contact cleaner, may prevent the new label from adhering to the existing label.**

**Do not use chemicals, such as carburetor cleaner and contact cleaner to clean the surface of the existing label.**

- 5) Carefully place the new label over the existing label, then gently but firmly press it into place.

#### **CAUTION**

**The new label cannot be easily removed.**

**Use special care when applying the new label so you do not make any creases in it.**

- 6) Close the seat on the vehicle.